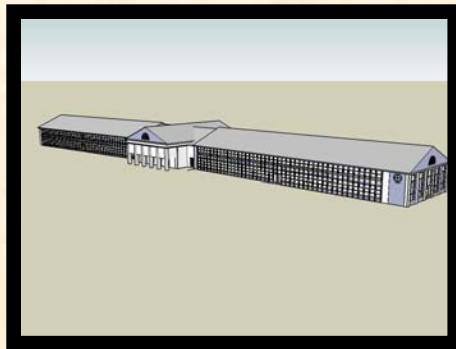


Three-Dimensional Spatial Representation of Furman Hall

Furman University – Greenville, SC

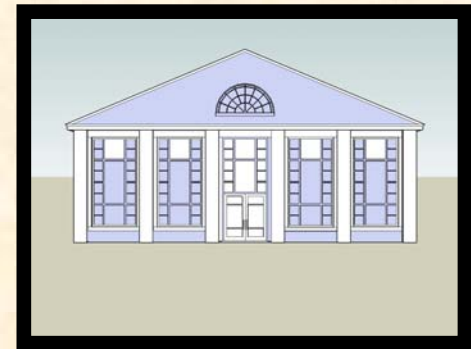
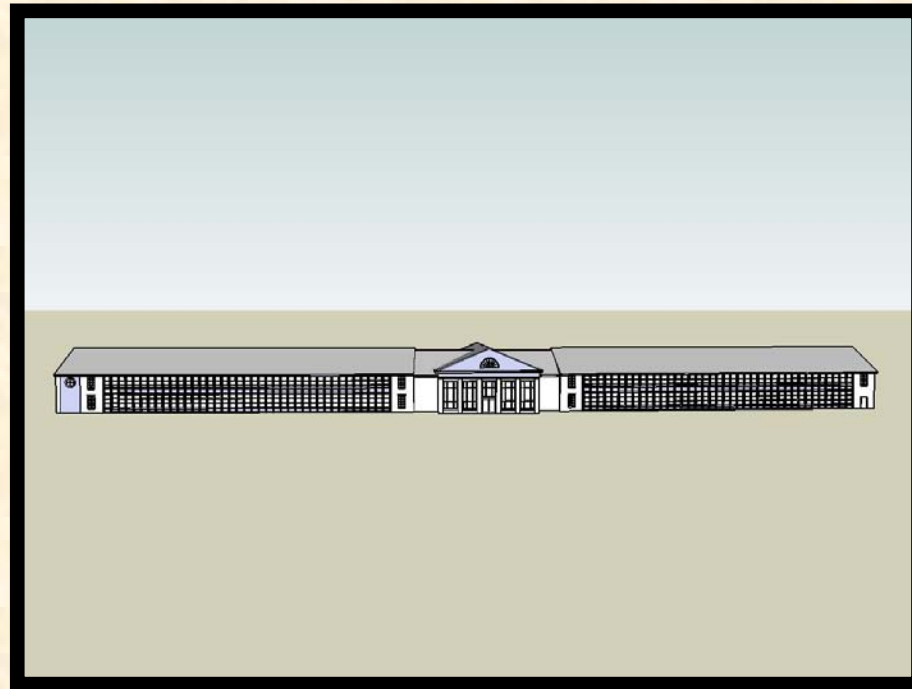
Christopher M. Tasich

Abstract: In the past decade, geographical modeling programs using satellite imagery have become widely available for public use. Recently, three dimensional images of building structures have been incorporated into these programs. The objective of this project is to provide a three dimensional view of Furman Hall at Furman University in Greenville, South Carolina. Using Google Sketchup, I created a three dimensional image of Furman Hall and then placed the finished product for viewing in Google Earth. I believe this virtual representation of Furman Hall will help pave the way for the elaboration and completion of a virtual Furman campus. A virtual campus will serve as a great tool for attracting prospective students, especially students unable to view the campus in person.



Southwest End

Methods: The three dimensional images were developed using Google Sketchup with an AutoCAD (.dwg) file serving as the footprint. Some dimensions were obtained through the .dwg file, while most were obtained with an architect's scale or by physical measurements of the site.



South End

Pending Work: The project is only in the preliminary stages and will be developed further with added textures and more detail as information becomes available. Upon completion, the product will be placed in the Google Earth database for viewing around the world. Eventually, I hope to develop a complete virtual campus of Furman University.

Results/Conclusions: Overall, the project is a great idea and can benefit the University tremendously – especially by attracting prospective students. However, a lack of blueprints and more importantly a lack of dimensions can dramatically increase difficulty and decrease time efficiency. Extensive research would be required to develop a virtual campus of Furman University.

Acknowledgements: I would like to thank Astrid Truman and Furman University for providing the blueprints and .dwg files from which most dimensions were taken.